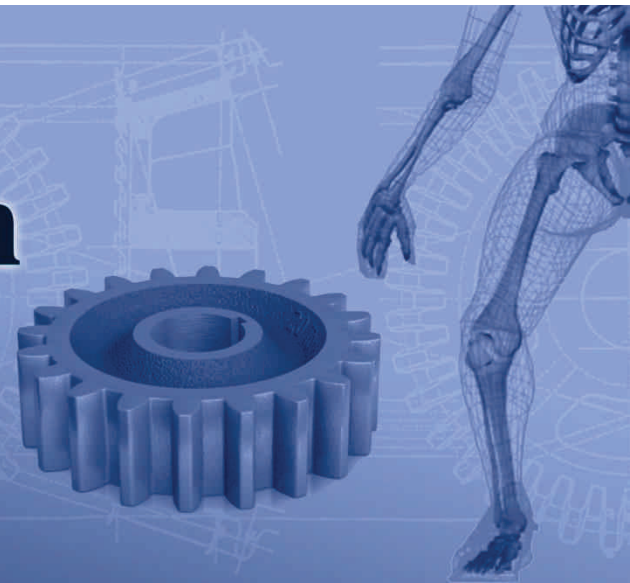




Sustainable Construction & Design

Volume 2, 2011



Metal Structures Centre - 2011



Sustainable Construction & Design

**Volume 2, 2011
Issue 3**

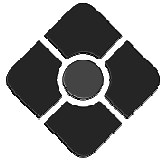
Published by
Laboratory Soete – Ghent University
Technologiepark 903
9052 Zwijnaarde – Belgium
<http://www.tribology-fatigue.ugent.be/>

Edited by: Jeroen Van Wittenberghe
ISSN: 2032-7471

Editor

Jeroen Van Wittenberghe

Co-editing organization



MSC - Metal Structures Centre

Editorial Board

Serge Claessens
Patrick De Baets
Wim De Waele
Sergei Glavatskikh
Stijn Hertelé
Sven Vandeputte
Walter Vermeirsch

International Scientific Advisory Committee

Magd Abdel Wahab
Rudi Denys
Ney Francisco Ferreira
Gabor Kalacska
Eli Saul Puchi Cabrera
Dik Schipper
Mariana Staia
Laszlo Zsidai

Sustainable Construction & Design, volume 2, issue 3, 2011

ISSN 2032-7471

Published by:
Laboratory Soete – Ghent University
Technologiepark 903
9052 Zwijnaarde – Belgium
<http://www.tribology-fatigue.ugent.be/>

Cover design by Jeroen Van Wittenberghe

The texts of the papers in this volume were set individually by the authors or under their supervision. Only minor corrections to the text may have been carried out by the publisher.

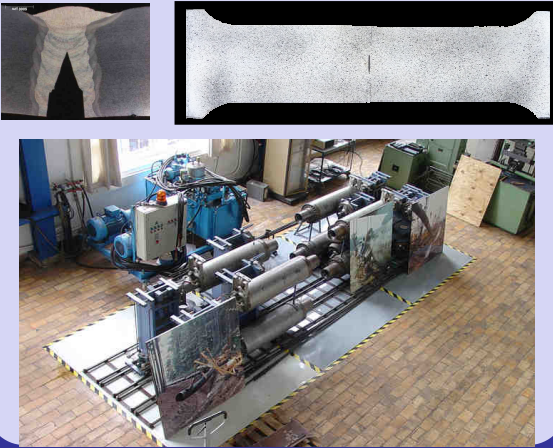
No responsibility is assumed by the publisher, editor and authors for any injury or damage to persons or property as a matter of products liability, negligence or otherwise, or from any use or operation of any methods, products, instructions or ideas contained in the material herein.

© Laboratory Soete 2011

The rights of this publication are held by the Laboratory Soete according to the Creative Commons, Attribution 2.0. This means users are allowed to share and remix the work, but with attribution to the authors. All with the understanding that other rights on the works are not affected by this license. The full license text can be found on <http://creativecommons.org/licenses/by/2.0/be/>

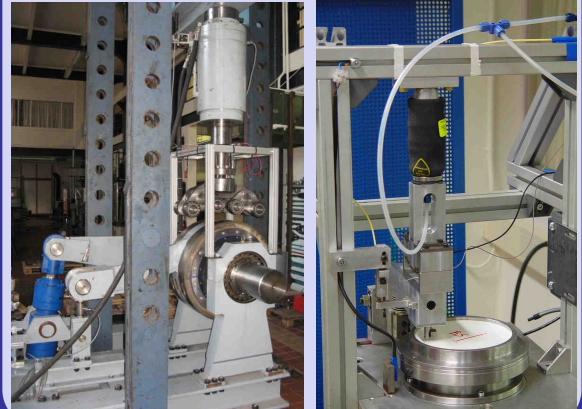
Fracture mechanics

Experts in pipeline weld research.



Tribology

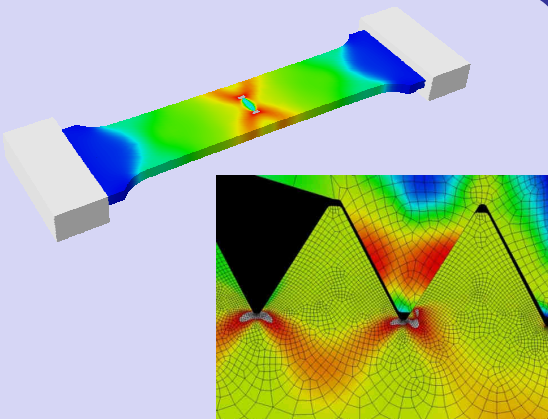
Small to large scale experimental testing.



Labo Soete

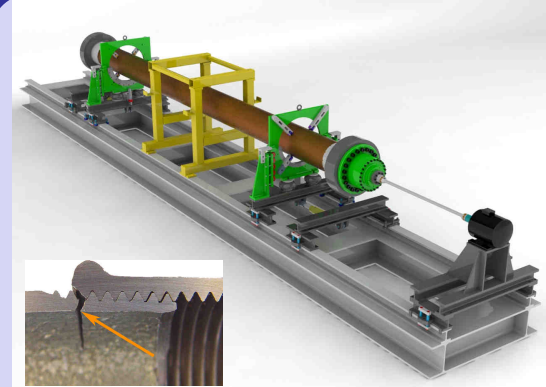
LABO SOETE – GHENT UNIVERSITY
Dept. of Mechanical Construction & Production
Technologiepark 903
9052 Zwijnaarde – BELGIUM

<http://www.tribology-fatigue.ugent.be>



*Modelling of engineering structures
and applications.*

Finite Element Analysis



*Fatigue testing and analysis. E.g.
research on pipe joints in a full scale
resonant bending fatigue setup.*

Fatigue

Contents

Issue 3: Student contributions to the third Day of Research

Kinematics of the knee joint.....	353
<i>Sampers W., Sierens T.</i>	
Dental implants, what should be known before starting an in vitro study.....	360
<i>Verplancke K., De Waele W., De Bruyn H.</i>	
Conceptual design of a fretting fatigue testing device.....	370
<i>Borms N., De Schamphelaere D., De Pauw J., De Baets P., De Waele W.</i>	
Wear of conveyor chains with polymer rollers.....	378
<i>Kerremans V., Rolly T., De Baets P., De Pauw J., Sukumaran J., Perez Delgado Y.</i>	
Abrasive wear of link chains.....	388
<i>Van Steenkiste D., Plasschaert S., De Baets P., De Pauw J., Perez Delgado Y., Sukumaran J.</i>	
Implementation of an unloading compliance procedure for measurement of crack growth in pipeline steel.....	397
<i>Van Minnebruggen K., Van Puyvelde D., De Waele W., Verstraete M., Hertelé S., Denys R.</i>	
Failure behaviour of preloaded API line pipe threaded connections.....	407
<i>Seys J., Roeygens K., Van Wittenberghe J., Galle T., De Baets P., De Waele W.</i>	
Validation of a wide plate finite element model using digital image correlation.....	416
<i>De Keyser K., Van Acker F., Hertelé S., Verstraete M., De Waele W., Denys R.</i>	
Characterization of a resonant bending fatigue test setup for pipes.....	424
<i>Claeys J., Van Wittenberghe J., De Baets P., De Waele W.</i>	
Groove design for form fit joints made by electromagnetic pulse crimping.....	432
<i>Vanhulsel P., Van Wonterghem M., De Waele W., Faes K.</i>	
LME susceptibility of galvanised welded structures of high strength steels.....	442
<i>Vermeersch M., De Waele W., Van Caenegem N.</i>	
Friction welding of steel to ceramic.....	448
<i>Rombaut P., De Waele W., Faes K.</i>	
Magnetic pulse welding: lessons to be learned from explosive welding.....	458
<i>Verstraete J., De Waele W., Faes K.</i>	
Reliability analysis of semi-automatic train door systems in service on today's rolling stock of the SNCB.....	465
<i>Van der Gucht W., Vanwalleghem D., Bonne H., Eeckhout W., De Waele W., De Baets P.</i>	

Material selection for a new type of fire extinguisher	476
<i>Lambert L., De Waele W., Van De Vijver G.</i>	
Failure behaviour of a tumble dryer	486
<i>Droessaert S., De Waele W., De Grootte W., Delorge E.</i>	

Issue 3
Student contributions to the SCAD 2011 conference

Editorial

The final issue of the 2011 volume of the SCAD journal comprises selected student papers from the 2011 edition of the SCAD conference. Fields covered in this issue include fracture mechanics, fatigue, tribology, joining techniques, design of mechanical engineering systems and kinematics. The studies are carried out by either experimental or numerical studies.

On February 13, 2012 the SCAD Symposium will take place. The symposium is focussing at the research carried out by both master and PhD students at the Laboratory Soete and their partner institutions. More information about the 2012 SCAD symposium can be found on <http://www.scad.ugent.be/>.

Jeroen Van Wittenberghe

SCAD journal editor